



INVITATION TO APPLY
FOR ELIGIBILITY & TO BID

ITB 2505 S. 2025

**Procurement of Materials for Maintenance,
Rehabilitation, Revamp of Lines and Capital
Expenditure Projects**

INVITATION TO APPLY FOR ELIGIBILITY & TO BID

Invitation to Bid No. 2505, Series of 2025

**Procurement of Materials for Maintenance, Rehabilitation, Revamp of Lines and
Capital Expenditure Projects**

Iloilo III Electric Cooperative, Inc. (ILECO III), through its Bids and Awards Committee (BAC), invites all prospective bidders to apply for eligibility and to bid for the following hardware/materials:

**Bid Description : Procurement of Materials for Maintenance, Rehabilitation,
Revamp of Lines and Capital Expenditure Projects**

**Source of Fund : General Fund and Reinvestment Fund for
Sustainable CAPEX (RFSC)**

**Approved Budget Cost : ABC per Lot is shown in the table below, inclusive
of VAT and all other charges:**

Lot No.	Description	Approved Budget Cost	Price of Bidding Documents
Source of Fund: General Fund			
GF-1	Construction Materials	PhP 9, 226, 975.00	PhP 10,000.00
GF-2	Construction and Metershop Hardwares	PhP 2, 316, 575.00	PhP 5,000.00
GF-3	Fuse Cut-out	PhP 1, 825,000.00	PhP 5,000.00
GF-4	Fuse Link	PhP 3, 300, 875.00	PhP 5,000.00
GF-5	Steel Poles	PhP 17, 437, 500.00	PhP 25,000.00
GF-6	Conductors and Wires	PhP 8, 978, 000.00	PhP 10, 000.00
GF-7	Housewiring Materials	PhP 9, 470, 450.00	PhP 10,000.00
GF-8	Steel Casing and Meter Box	PhP 705,750.00	PhP 1,000.00
GF-9	HDPE Materials	PhP 3, 470, 000.00	PhP 5,000.00
GF-10	Transformer Oil	PhP 480, 000.00	PhP 500.00

Source of Fund: Reinvestment Fund for Sustainable CAPEX (RFSC)			
RF-1	KWHR Meters for Add-ons (Residential)	PhP 3,328, 000.00	PhP 5, 000.00
RF-2	KWHR Meters for Add-ons (For Low and High Voltage Consumers)	PhP 451, 000.00	PhP 500.00
RF-3	KWHR Meters for Change Meter (For Residential)	PhP 12, 787, 200.00	PhP 25, 000.00
RF-4	KWHR Meters for Change Meter (For Low and High Voltage Consumers)	PhP 857, 000.00	PhP 1, 000.00
RF-5	Distribution Transformers	PhP 7, 545, 000.00	PhP 10, 000.00
RF-6	Construction Materials and Hardwares for Extension of Open Secondary Distribution Projects	PhP 234, 778.00	PhP 500.00
RF-7	Conductors and Wires for Extension of Open Secondary Distribution Projects	PhP 2, 309, 500.00	PhP 5, 000.00
RF-8	Poles for Extension of Open Secondary Distribution Projects	PhP 2, 952, 000.00	PhP 5, 000.00
TOTAL		PhP 87, 675, 603.00	PhP 128, 500.00

A set of bidding documents will be issued to prospective bidders upon payment of a non-refundable amount indicated in the above table.

Kwhr Meters' initial delivery of 50% is within 45 days upon receipt of the P.O and the remaining 50% within another 30 days upon initial delivery. Delivery schedule for other items shall be 50% within 30 days upon receipt of the Purchase Order and the remaining 50% within another 30 days.

Bidding will be conducted through open competitive bidding procedures using non-discretionary "pass/fail" criterion. Bidder who cannot attend the Pre-bid Conference will no longer be allowed to join the bidding proper. ILECO III assumes no responsibility whatsoever to compensate or indemnify bidders for any expenses incurred in the preparation of bid.

The complete schedule of activities is listed as follows:

- **Issuance and Availability of Bid Documents**
05 February 2025 - 27 February 2025
- **Pre-Bid Conference**
14 February 2025, 9:00 AM, ILECO 3, Brgy. Preciosa, Sara, Iloilo
- **Opening of Bids**
27 February 2025, 9:00 AM, ILECO 3, Brgy. Preciosa, Sara, Iloilo



ILECO III reserves the right to reject any and all bids, declare a failure of bidding, and not award the contract in the following events:

1. Prima Facie Evidence of collusion between any employee or appropriate officer of the EC;
2. Collusion between or among the bidder themselves;
3. The BAC failed in following the Prescribed Bidding Procedures, and;
4. The project is no longer necessary as determined by ILECO III.

For further details, please contact MS. ATHENE LORRAINE D. OLLANAS/VINNY ROSE A. DELFIN, BAC Secretariat, ILECO III, Preciosa, Sara, Iloilo at telefax numbers (033) 3920-388, (033) 3920-104, (033) 3920-202, cell phone number 09691014226, email address bac.ileco3@gmail.com or visit our website www.ileco3.com.

(SGD) ENGR. ELNA B. FUENTES
Chairperson, Bids and Awards Committee



**DATE, TIME & MEDIUM OF PRE-BID CONFERENCE, SUBMISSION OF BIDS
& OPENING OF BIDS**

- Pre-bid Conference - **February 14, 2025 (Friday), 9:00 AM**
ILECO III, Board Room, Preciosa Sara, Iloilo

- Opening of Bids - **February 27, 2025 (Thursday), 9:00 AM**
ILECO III, Board Room, Preciosa Sara, Iloilo

INSTRUCTIONS TO BIDDERS

GENERAL STATEMENT

A set of Bid Documents will be issued to prospective bidders upon payment of the Non-Refundable amount as indicated in the Invitation to Bid published in Manila Times on February 5, 2025.

ILECO III assumes **NO RESPONSIBILITY** whatsoever to compensate or indemnify bidders for any expenses or losses incurred in the preparation of the bid and reserves the right to reject any and all bids, to waive any defect or informality of the bid proposals and to accept the offer it deems most advantageous to the Cooperative.

CONDUCT OF PRE-BID CONFERENCE

1. **Attendees to the pre-bid conference are only the prospective bidders who have bought bid documents, or their representative with duly notarized authorization.** Prospective bidders who are not represented during the Pre-bid Conference will not be allowed to participate and submit their proposals in the opening of bids.

2. Any statement made at the pre-bid conference shall not modify the terms of the bidding documents unless such statement is specifically identified by the BAC in writing as an amendment or as Supplemental Bulletin.

3. The BAC and the prospective bidders shall synchronize their time pieces in preparation for the scheduled Bid Opening. The BAC shall have an official timer.



SUBMISSION, RECEIPT AND OPENING OF BID ENVELOPES

I. Submission of Bids

The two (2) envelopes system shall be used. Prospective bidders shall submit their bid documents on the specified deadlines for the submission of bid proposals which are sealed, addressed to "ILECO III Bids and Awards Committee" and must contain the documents required.

Each Bidder shall submit one hard copy of the first and second components of its Bid. All documents submitted must be certified true copy of the original.

A bid shall be composed of two (2) components which shall be in placed in two (2) separate sealed envelopes properly labeled as follows:

1. FIRST ENVELOPE - Eligibility Requirements (Class "A" Documents)

A. Legal Documents (Folder 1)

- DTI Business name registration or SEC registration certificate;
- Valid and current Mayor's Permit/Municipal License; (principal place of business)
- Tax payers identification number;
- BIR Value Added Tax Registration;
- Two (2) certificates shall be submitted by the bidders:
 - a. notarized self-attesting affidavit stating that the contractor himself is not blacklisted or banned from bidding by the government or any of its agencies and/or other private corporations or electric cooperatives, and:
 - b. Certificate preferably from NEA, other electric cooperatives or other private corporations that the contractor is not blacklisted or banned from bidding by the government or any of its agencies and other private corporations or electric cooperatives.
- Compliance with EO # 398:
 - a. Proof of VAT payment for the past six (6) months (July 2024-December 2024)
 - b. Tax clearance from the BIR valid during the Opening of Bids on February 27, 2025.
 - c. Certification under oath from the bidder's responsible officers that the bidder is free and clear of all liabilities with the government.



- Updated Company Profile

B. Technical Document (Folder 2)

- Statement in matrix form of all on-going and completed government and private contracts (service contracts, maintenance contracts, purchase orders, job orders, etc.) within the relevant period of five (5) years, where applicable, including contracts awarded but not yet started, if any. The statement shall state whether each contract is:
 - a. On-going, completed or awarded but not yet started; within the relevant period of five (5) years, where applicable. Each contract should include the following:
 - i. The name of the contract
 - ii. Date of contract
 - iii. Amount of contract and value of outstanding contracts
 - iv. Date of Delivery
 - v. End-users acceptance, if completed
- Statement identifying the bidder's Single Largest Completed Contract (SLCC) similar to the contract to be bid within the relevant period of five (5) years. Similar contracts shall refer to "Supply and Delivery of Electrical Materials to Electric Cooperatives "

C. Financial Documents (Folder 3)

- Complete set of latest audited financial documents for the year 2023 stamped "Received" by the BIR or its duly accredited and authorized institutions, showing, among others, the prospective bidders' total current assets and liabilities. Complete set of financial statement includes the following:
 - b. Balance Sheet
 - c. Income Statement
 - d. Statement of Changes in Equity
 - e. Cash Flow Statement
 - f. Notes to Financial Statement
 - g. Statement of Management Responsibility for Financial Statement
 - h. Computation of the Net Financial Contracting Capacity (NFCC), NFCC must be at least equal to the ABC of the respective lot joined by the bidder, using $K=10$ in the computation



D. Class "B" Documents (Folder 4)

- Valid Joint Venture Agreement, in case of a joint venture. Each member of the joint venture shall submit the required eligibility documents
- Letter Authorizing the BAC or its duly authorized representative to verify any or all of the documents submitted for the eligibility check.
- Notarized statements that each of the documents submitted in the satisfaction of the eligibility requirements is an authentic and original copy, or true and faithful reproduction or copy of the original, complete and that all statements and information provided therein are true and correct.

2. SECOND ENVELOPE - Bid Proposals

A. Technical Proposals (Folder 1)

- Bid Security as to form, amount and validity period
- Authority of the signatory
- Confirming Statement on delivery schedule
- Confirming Statement on warranty being offered
- Details of Technical Specification

B. Financial Proposal (Folder 2)

- Bid prices in the prescribed form
- Unit cost for each item must be indicated as well as the extended cost
- The offered brand and country of origin for each item must be stated
- The total amount of bid shall be written in words as well as in figures. In case of discrepancies between bid price in figures and in words, the latter shall prevail.

Bidders may also include the following documents for BAC's further reference:

- ❖ Manufacturer's certificate
- ❖ ISO certificate
- ❖ Product brochures/ technical specifications
- ❖ Any other relevant catalogue/ literature

Note that all requirements should be properly labeled and each set of documents shall have separate folders. The ***FIRST ENVELOPE*** shall contain four (4) folders and the ***SECOND ENVELOPE*** shall contain two (2) folders.



II. Receipt of Bids

Registration of bidders is a must indicating the exact time of arrival, name of the bidder/ or its authorized representative. **Submission of Bids after the deadline set by the BAC shall not be accepted.**

III. Opening of Bids

Opening of Bid Proposals shall commence exactly at the time stipulated in the invitation to Bid and as discussed during the Pre-bid conference. The BAC shall determine if each prospective bidder is qualified to participate in the bidding by examining the completeness of each prospective bidder's requirements or statements as contained in the 1st envelope against checklist of requirements.

First Envelope containing the required documents shall be opened in the following order:

1. Legal Documents (Class "A" Documents)
2. Technical Documents
3. Financial Documents
4. Class "B" Documents

The submitted documents of each bidder shall be examined and checked to ascertain that they are complete using a non-discretionary "pass/fail" criterion. If a prospective bidder passed all the examination of requirements in the 1st envelope, it shall be rated **PASSED** and shall be rated **FAILED** if it fails to submit the requirements or incomplete submission of requirements.

The second envelope of the Bid Proposals of bidders that were rated FAILED shall no longer be opened and shall be returned to the bidder.

After determining compliance with the requirements in the first envelope, the second envelope (envelope 2) of each remaining eligible bidder whose first envelope (envelope 1) was rated PASSED shall forthwith be opened in the following order:

1. Technical Proposal
2. Financial Proposal

Financial bid proposals higher than the ABC shall outrightly be disqualified.

All bidders are required to include the cost of all freight and taxes in their bid offer such as but not limited to Value Added Tax (VAT), income tax, local taxes and other fiscal levies and



duties. Such bids, including taxes, shall be the basis for bid evaluation, comparison and for determining the Lowest Calculated Bid.

Bids shall then be ranked in the ascending order of their total calculated bid prices per lot, as evaluated and corrected for computational errors, and other bid modifications to identify the Lowest Calculated Bid.

BID EVALUATION

In case of discrepancies for tendered bid offer, the following shall be observed:

1. Figures against word – Words shall prevail;
2. Total price per item against price per item multiplied by the quantity – Price per item multiplied by the quantity shall prevail;
3. Stated total price against actual sum of prices of component items – Actual sum of prices of component shall prevail
4. Unit cost in the detailed estimate against unit cost in bill of quantities – Unit cost in its bill of quantities shall prevail.

In order for ILECO III to consider a bid as complete and responsive, the bidder should supply all pertinent information, in the form of an actual amount, zero, or dash, for each of the required items in the bidding documents, especially in the bid price form per lot.

Bids that do not address or provide all the required items or where no price was indicated in the Bidding Documents, including bill of quantities, shall be considered non-responsive, and thus, automatically disqualified. However, specifying a "0" (zero) or a "-" (dash) for an item would mean that it is being offered for free to ILECO III.

POST-QUALIFICATION

The bid which is determined to be the Lowest Calculated Bid shall be subjected to post qualification. If the bidder with the Lowest Calculated Bid passed all the criteria in the post qualification, the bid shall be considered **LOWEST CALCULATED RESPONSIVE BID (LCRB)**.

Post evaluation is conducted to verify, validate and ascertain all statements made and documents submitted by the bidder with LCB as stated in the bidding documents. It is also conducted to determine whether the bidder with the Lowest Calculated Bid complies with and is responsive to all the requirements and conditions for eligibility and bidding and to be able to declare the Lowest Calculated Responsive Bid (LCRB).



During post evaluation, bids are validated and all statements made and documents submitted by the bidder with the Lowest Calculated Bid shall be ascertained under the following criteria:

1. Legal Requirements
2. Technical Requirements
3. Financial Requirements

If the Lowest Calculated Bid failed in the post qualification, the BAC shall proceed with its post-qualification process to the next Lowest Calculated Bid until a responsive bid shall have been determined.

AWARD OF CONTRACT AND IMPLEMENTATION

1. Notice of Award shall be made to the Lowest Calculated Responsive Bid within ten (10) to fifteen (15) calendar days from the date of confirmation by the Board.
2. The ILECO III, however, reserves the right to reject any and all bids, declare a failure of bidding, or not award the Purchase Order for any reason or to waive any informality in bids received whenever such rejection or waiver is in the interest of the Cooperative.
3. To guarantee the faithful performance of the contract awardees', the bidders shall post a Performance Security equivalent to five percent (5%) of the contract price in the following form:
 - ✓ Cashier's or Manager's Check issued by a Universal or Commercial Bank
 - ✓ Bank Draft/Guarantee or Irrevocable Letter of Credit issued by a Universal or Commercial Bank
 - ✓ Bank deposit to ILECO III designated account to be validated by ILECO III cashier prior to issuance of NTP

PROTEST MECHANISM

Decisions of the BAC in all stages of procurement may be protested and the protest or request for reconsideration shall be in writing and should be filed with the Office of the General Manager, as the representative of the Head of the Procuring Entity (HOPE), within three (3) calendar days from receipt of the notice of result of bidding. The HOPE shall resolve with finality the protest or request for reconsideration within seven (7) calendar days from the filing thereof and furnish the bidder a copy of the resolution immediately from its promulgation.

In no case shall the protest or request for reconsideration stay or delay the bidding process. However, the request for reconsideration must first be resolved before any award to the winning bidder shall be made.

FORM AND AMOUNT OF BID SECURITY

All bids shall be accompanied by a Bid Security payable to "**ILOILO III ELECTRIC COOPERATIVE, INC.**" as guarantee that the successful bidder shall enter into contract from receipt of the Notice Award. Required Bid Security amounting to 2% of the ABC shall be in any of the following form:

- ✓ Cashier's or Manager's Check issued by a Universal or Commercial Bank
- ✓ Bank Draft/Guarantee or Irrevocable Letter of Credit issued by a Universal or Commercial Bank

The following shall be the required amount of Bid Security per lot:

Lot Nos.	Amount of Bid Security
GF-1	₱184,539.50
GF-2	₱46,331.50
GF-3	₱36,500.00
GF-4	₱66,017.50
GF-5	₱348,750.00
GF-6	₱179,560.00
GF-7	₱189,409.00
GF-8	₱14,115.00
GF-9	₱69,400.00
GF-10	₱9,600.00
RF-1	₱66,560.00
RF-2	₱9,020.00
RF-3	₱255,744.00
RF-4	₱17,140.00
RF-5	₱150,900.00
RF-6	₱4,695.56
RF-7	₱46,190.00
RF-8	₱59,040.00

Bid Security shall be returned to bidders that were rated FAILED. However, for bids that were rated PASSED, bid security shall be returned only after the bidder with the Lowest Calculated Responsive Bid has signed the contract and furnished the Performance Security.



FORM AND AMOUNT OF PERFORMANCE SECURITY

4. To guarantee the faithful performance of the winning bidder of its obligations under the contract prepared in accordance with the bidding documents, it shall post a Performance Security upon the signing of the contract. It must be five percent (5%) of the Contract Price in the following form:
 - ✓ Cashier's or Manager's Check issued by a Universal or Commercial Bank
 - ✓ Bank Draft/Guarantee or Irrevocable Letter of Credit issued by a Universal or Commercial Bank
 - ✓ Bank deposit to ILECO III designated account to be validated by ILECO III cashier prior to issuance of NTP

If the bidder fails or refuses to post the required Performance Security and enter into Contract with ILECO III within the prescribed period:

- a) If for justifiable causes, the bidder with the LCRB fails or refuses or is otherwise unable to enter into contract with ILECO III, the BAC shall disqualify the said bidder and shall undertake post qualification for the next ranked Lowest Calculated Bid. This procedure shall be repeated until an award shall be made. However, if no award is possible, the Contract shall be subjected to a new bidding.
- b) In the case of failure to post the required performance security, the Bid Security shall be forfeited without prejudice to the imposition of sanctions.

BID VALIDITY

Bids and bid securities shall be valid for a period of one hundred twenty (120) calendar days from the date of the opening of bids.

In exceptional circumstances, prior to the expiration of the bid validity period, ILECO III may request bidders to extend the period of validity of their bids. The request and responses shall be made in writing. The corresponding Bid Security shall likewise be extended corresponding to the extension of the bid validity period at the least. A bidder may refuse the request without forfeiting its Bid Security, but his bid shall no longer be considered for further evaluation and award. A bidder granting the request shall not be required or permitted to modify its bid.

TERMS AND CONDITIONS



I. General

The following terms and conditions, together with such terms are set forth in the Purchase Order Form, with such specifications or other documents as are incorporated by reference, as amended in any subsequent authorized writing from ILECO III, shall constitute the entire contract (the "Purchase Order") between ILECO III and Supplier. If bid documents performance specifications, technical product descriptions or other similar descriptive materials submitted by Supplier in connection with this Purchase Order, or Supplier's proposal, have been incorporated by reference, these shall not be deemed to supersede any contrary requirements of ILECO III, but to the extent that such materials are not inconsistent with ILECO III's requirements, they shall constitute a part of the basis of this agreement. The Purchase Order shall be deemed to have been accepted by the Supplier upon receipt by the ILECO III of any writing, including a writing transmitted by email or other means of electronic communication.

II. Payment

Discount terms are as set forth in the Form. All items shall be payable within 6 months after full delivery except for Distribution Transformer, kWhr Meters and Poles which is for six (6) months consignment. The price shall include shipping, handling, fuel surcharges or similar fees and all applicable government taxes and duties. Suppliers assign to ILECO III all rights to refund of sales and use the tax paid in connection with the Purchase Order and agrees to cooperate with ILECO III in the processing of any refund claims. All expenses related to pre-delivery inspection, if any, shall be shouldered by the Supplier.

III. Delivery Time and Completion Schedule

Kwhr Meters initial delivery of 50% is within 45 days upon receipt of the P.O and the remaining 50% within another 30 days upon initial delivery. Delivery schedule for other items shall be 50% within 30days upon receipt of the Purchase Order and the remaining 50% within another 30 days.

If delivery dates cannot be met, Supplier shall inform ILECO III immediately. Such notice shall not, however, constitute a change to the delivery or completion terms of the Purchase Order unless ILECO III modifies this Purchase Order in writing. If the item is not received by the date specified, ILECO III, at its option and without prior notice to Supplier, may either approve a revised date or may cancel the Purchase Order and may obtain such goods elsewhere and in either event the Supplier shall be liable to ILECO III for any resulting loss and expenses incurred by the latter. Supplier's sole remedy for a delay caused by ILECO III shall be an extension in the time for Supplier's performance equal to the duration of ILECO III's delay. Supplier shall not be liable for damages resulting from supplier's failure to deliver or complete,



or for delays in delivery or completion, caused solely by strikes not caused by or within the control of Supplier, lock-outs not caused by or within the control of Supplier, fires, war or acts of God. Compliance with the Delivery Schedule is a must under the Purchase Order.

IV. Improper Performance and Disputes

In addition to other remedies provided by law, ILECO III reserves the right to reject any goods or to revoke any previous acceptance and to cancel all or any part of the Purchase Order if Supplier fails to deliver all or any part of the goods in accordance with the terms and conditions of the Purchase Order. Acceptance of any part of the Purchase Order shall not bind ILECO III to accept any future shipments of work, not deprive it of the right to return goods already accepted.

At ILECO III's option, if it so elects in its sole description with regard to any particular dispute, any dispute arising in connection with the Purchase Order shall be resolved by attribution in accordance with the governing Philippine laws & rules of arbitration. ILECO III AND SUPPLIER WAIVE THEIR RIGHT TO A JURY TRIAL WITH REGARD TO ANY DISPUTE ARISING IN CONNECTION WITH THIS PURCHASE ORDER.

V. Warranty

Supplier expressly warrants all materials delivered under this Purchase Order to be brand new, free from defects in material and workmanship and to be of the quality, size and dimensions ordered in conformity with all specifications and other data incorporated as part of this Purchase Order. Warranty period shall be at least one (1) year from delivery period. Damaged materials under warranty will be automatically replaced by the supplier and all cost incurred related to return of the items shall be shouldered by supplier.

VI. Risk of Loss

Unless the Purchase Order expressly states otherwise, all goods shall be shipped FOB: WAREHOUSE, ILECO III HEADQUARTERS SITE, PRECIOSA, SARA, ILOILO. Risk of loss shall not pass to ILECO III until goods called for in the Purchase Order actually have been received and accepted by ILECO III at the destination specified herein. Supplier assumes full responsibility for packing, crating, marking, transportation and liability for loss.

VII. Assignment/ Subcontracting



Neither party shall have any right to assign this Purchase Order or any benefits arising from this Purchase Order without prior written consent of the other, and unless otherwise agreed upon in writing, the rights of any assignee shall be subject to all set-offs, otherwise agreed in writing by ILECO III, delegate or subcontract on any item of material to be delivered or performed under this Purchase Order.

VIII. Termination of Purchase Order

ILECO III, in its sole description, may terminate this Purchase Order, in whole or in part, at any time without incurring liability to Supplier for lost profits, or any other costs or damages, other than proportionate value of the purchase price of goods delivered, if (i) Supplier, without justifiable cause, failed to deliver the goods order more than twice, (ii) habitual delay of delivery of goods to ILECO III, (iii) continuous transaction with the supplier is deemed to be prejudicial to the cooperative. Payment due shall be the purchase of price specified for goods delivery.

ayment due shall be the purchase of price specified for goods delivery.

IX. Liquidated Damages

In case of breach of Contract, liquidated damages shall be at least equal to 1/10 of 1% (.01%) of the cost of unperformed portion of the Contract, for every day of delay.

Once the cumulative amount of liquidated damages reaches ten percent (10%) of the amount of the contract, the contract shall be RESCINDED without prejudice to other courses of action and remedies to be undertaken.

X. Reservation Clause

ILECO III reserves the right to:

1. Reject any and All Bids
2. Declare Failure of Bidding
3. Not Award the Contract

Situations:

1. Prima Facie Evidence of collusion between any employee or appropriate officer of the EC;
2. Collusion between or among the bidder themselves;
3. The BAC failed in following the Prescribed Bidding Procedures, and;



4. The project is no longer necessary as determined by ILECO III.

Failure of Bidding

There shall be a failure of bidding if:

1. No bids received
2. No bid qualifies as the Lowest Calculated Responsive Bid.
3. The bidder determined to be the "Lowest Calculated Responsive Bid" refuses without justifiable cause to accept the award of contract.

Under any of the above instances, the contract shall be re-advertised and re-bid observing the same process.



**SAMPLE FORMAT OF BID AND PRICE FORM
(SUPPLIER'S LETTERHEAD)**

Date: _____

BIDS AND AWARDS COMMITTEE

Iloilo III Electric Cooperative, Inc.
Sara, Iloilo

Sir/Madam:

In connection with your **Invitation to Bid No. 2505, S. of 2025**, I/we proposed to furnish and deliver in conformity with the terms and conditions stated in the bid documents the items which I/we quoted as specified in our Proposals and do bind myself/ourselves to accept the award subject to the Purchase Order Terms & Conditions except those that were expressly modified.

To guarantee faithful compliance of herein offer with the terms and conditions in relation to Invitation to Bid No. 2505, s. of 2025, I/we file my/our Bid Security amounting to (**amount of Bid Security in words and in figures**) representing the (**2% for manager's/cashier's check**) of the ABC.

I hereby guarantee that I have carefully read and understood and agree to all terms specifications.

Name of Establishment/Company

Address

By: _____
Signature of Proprietor/Authorized Representative

Designation

NOTE: To be attached in Envelope 2-Folder 1.a. Bid Security as to form, amount and validity period

(SUPPLIER'S LETTERHEAD)

BID AND PRICE FORM

Bid No. : ITB NO. 2505, S. 2025
 Name of Project : Procurement of Materials Maintenance, Rehabilitation,
 Revamp of Lines and Capital Expenditure Projects
 Source of Fund : General Fund and RFSC

Note: Items marked with asterisk * shall have at least one (1) unit sample to be submitted on or before the Opening of Bids.

Lot GF-1: Construction Materials						
ITEM #	DESCRIPTION	UOM	QTY	UNIT COST	TOTAL AMOUNT	BRAND & COUNTRY OF ORIGIN
1	Anchor, Expanding, 10,000 Pounds, 8 Ways, Galvanized Steel	set	250			
2	Rod, Armor, Preformed, #1/0 ACSR, Single Support	pc	100			
3	Rod, Armor, Preformed, #2/0 ACSR, Single Support	pc	100			
4	Bolt, Double Arming, 5/8" X 18"	pc	225			
5	Bolt, Double Arming, 5/8" X 20"	pc	250			
6	Bolt, Double Arming, 5/8" X 22"	pc	50			
7	Bolt, Double Upset, 5/8" X 10"	pc	250			
8	Bolt, Double Upset, 5/8" X 12"	pc	200			
9	Bolt, Double Upset, 5/8" X 16"	pc	100			
10	Bolt, Machine, 1/2" X 6"	pc	400			
11	Bolt, Machine, 1/2" X 8"	pc	50			
12	Bolt, Machine, 1/2" X 10"	pc	100			

13	Bolt, Machine, 1/2" X 12"	pc	100			
14	Bolt, Machine, 5/8" X 6"	pc	75			
15	Bolt, Machine, 5/8" X 8"	pc	350			
16	Bolt, Machine, 5/8" X 10"	pc	450			
17	Bolt, Machine, 5/8" X 12"	pc	250			
18	Bolt, Machine, 5/8" X 14"	pc	125			
19	Bolt, Machine, 5/8" X 16"	pc	100			
20	Bolt, Machine, 5/8" X 22"	pc	50			
21	Bolt, Oval Eye, 5/8" X 8"	pc	300			
22	Bolt, Oval Eye, 5/8" X 10"	pc	450			
23	Bolt, Oval Eye, 5/8" X 12"	pc	125			
24	Bolt, Oval Eye, 5/8" X 14"	pc	125			
25	Bolt, Oval Eye, 5/8" X 18"	pc	125			
26	Bolt, Single Upset, 5/8" X 8"	pc	250			
27	Bolt, Single Upset, 5/8" X 10"	pc	250			
28	Bolt, Thimble Eye, 5/8" X 8", Type" Curve	pc	250			
29	Bolt, Thimble Eye, 5/8" X 10", Type " Curve	pc	175			
30	Bolt, Thimble Eye, 5/8" X 10", Straight Type	pc	100			
31	Brace, Angle, 1-1/2" X 1-1/2" X 3/16", 60" Span	pc	250			
32	Brace, Sidearm, Diagonal, 7 Feet	pc	100			
33	Brace, Sidearm, Vertical	pc	75			
34	Bracket, Without Spool, Secondary (Angle)	pc	375			
35	Clamp, Anchor Bonding, Single Eye Rod, 5/8	pc	250			

**Procurement of Materials Maintenance, Rehabilitation,
Revamp of Lines and Capital Expenditure Projects**



36	Clamp, Deadend Strain, #1/0- #2/0 ACSR	pc	300			
37	Clamp, Deadend Strain, #3/0- #4/0 ACSR	pc	100			
38	Clamp, Deadend Strain, #336 ACSR	pc	100			
39	Clamp, Guy Straight, 3 Bolt, Heavy Duty Steel	pc	500			
40	Clamp, Hot line, #2-#2/0 ACSR	pc	250			
41	Clamp, Hot line, #2-#4/0 ACSR	pc	150			
42	Clamp, Loop Deadend, #1/0 ACSR	pc	750			
43	Clamp, Loop Deadend, #2/0 ACSR	pc	750			
44	Clamp, Loop Deadend, #4/0 ACSR	pc	250			
45	Clamp, Suspension, Aluminum Alloy Clevis, 2 Bolts #2/0 ACSR Max.	pc	300			
46	Clevis, Secondary Swinging Without Spool	pc	500			
47	Clevis, Secondary, Deadend Without Spool	pc	175			
48	Clevis, Service, Swinging Without Spool	pc	375			
49	Connector, Compression, " YPC 2A8U "	pc	25,000			
50	Connector, Compression, #1/0 - #2/0 ACSR Run To #1/0 - #2/0 , YHO 300	pc	1,250			
51	Connector, Compression, #2 - #4/0 ACSR Run To #6 - #2 , YHO 150	pc	5,000			
52	Connector, Compression, #2 - #4/0 ACSR Run To #6 - #2 , YHO 250	pc	1,000			
53	Connector, Compression, #2 - #4/0 ACSR Run To #6 - #2 , YHO 400	pc	250			
54	Connector, Compression, #2 - #4/0 ACSR Run To #6 - #2 , YHO 100	pc	1,500			
55	Connector, Compression, #2/0 - #4/0 ACSR Run To #2/0 - #4/0 , YHO 350	pc	500			

**Procurement of Materials Maintenance, Rehabilitation,
Revamp of Lines and Capital Expenditure Projects**



56	Connector, Compression, #6 - #1/0 ACSR Run To #6 -#2 , YHO 200	pc	1,500			
57	Crossarm steel, 3"x4"x8', 3mm	pc	100			
58	Insulator, Pin Type, Porcelain, ANSI, Class 55 - 5 (Color: Gray)	pc	1,750			
59	Insulator, Spool, 1-3/4", ANSI, Class 53 - 2	pc	500			
60	Insulator, Spool, 3", ANSI, Class 53 - 4	pc	500			
61	Insulator, Suspension, 6", Clevis Type, ANSI Class 52-1	pc	750			
62	Nut, Eye, 5/8", Conventional	pc	500			
63	Terminal Lug Single Eye for #2	pc	200			
64	Terminal Lug Single Eye for #2/0	pc	200			
65	Terminal Lug Single Eye for #4/0	pc	200			
66	Terminal Lug Double for Eye #336.4	pc	50			
67	Rod, Anchor, Threaded, Single Eye, 5/8" X 7'	pc	250			
68	Grounding Rod, Steel, Galvanized, 5/8" X 10'	pc	2,500			
69	Shackle, Anchor 5/8", Forged Steel, Galvanized	pc	50			
70	Connector, Ground Rod (Clamp) for 5/8" Steel Rod	pc	250			
71	Washer, Square, Flat, 2-1/4" X 2-1/4" X 3/16", 13/16" Diameter Hole	pc	7,500			
72	Terminal Cover seal (Red)	pc	10000			
73	Terminal Cover seal (Yellow)	pc	10000			
74	Terminal Cover seal (Green)	pc	5000			
TOTAL BID FOR LOT GF-1				Php_____		

LOT GF-2: Construction Hardwares & Materials for Metershop						
ITEM #	DESCRIPTION	UOM	QTY	UNIT COST	TOTAL AMOUNT	BRAND & COUNTRY OF ORIGIN
1	Clamp, Pole, Single Support	pc	50			
2	Clamp pole, 7"- 8",type RL	pc	15			
3	Clamp pole, 8"- 9",type RL	pc	15			
4	Compression, Sleeve for 336.4 ACSR	pc	125			
5	Connector, Wedge Type, for #1/0 - #1/0 ACSR	pc	100			
6	Connector, Wedge Type, for #2/0 - #2/0 ACSR	pc	150			
7	Connector, Wedge Type, for #4/0 - #4/0 ACSR	pc	150			
8	Connector, Wedge Type, for #336.4MCM - #336.4 MCM	pc	50			
9	Clamp, Stirrup for #2-#4/0 (Hotline Type)	pc	100			
10	Insulator, Pin Type, Porcelain, ANSI, Class 56-2 for 1" thread (Color: Gray)	pc	500			
11	Bracket, Mounting for fuse cut-out & arrester	pc	175			
12	Bracket, Transformer pole mounting, 1 phase	pc	75			
13	Bracket, Transformer pole mounting, 3 phase	pc	60			
14	Pole cap	pc	150			

**Procurement of Materials Maintenance, Rehabilitation,
Revamp of Lines and Capital Expenditure Projects**



15	Guy Grip for 3/8"	pc	500			
16	Meter Seal Box Type	pc	15,000			
17	Meter Base , 5 Jaws, Rectangular	pc	30			
18	Meter Base , 4 Jaws, Rectangular	pc	75			
19	Lead Seal " small" (Kilo)	kl	1,000			
20	Magnet Wire # 18 ,kilo	kl	250			

TOTAL BID FOR LOT GF-2 PhP _____

Lot GF-3: Fuse Cut-out

ITEM #	DESCRIPTION	UOM	QTY	UNIT COST	TOTAL AMOUNT	BRAND & COUNTRY OF ORIGIN
1	Fuse Cut-out & Arrester Combination, 15kV, Class 100*	set	100			
2	Fuse Cut-out & Arrester Combination, 15kV, Class 200*	set	100			
3	Fuse Tube Cut outs for Class 100	set	100			
4	Fuse Tube Cut outs for Class 200	set	100			

TOTAL BID FOR LOT GF-2 PhP _____

Lot GF-4: Fuse Link

ITEM #	DESCRIPTION	UOM	QTY	UNIT COST	TOTAL AMOUNT	BRAND & COUNTRY OF ORIGIN
1	Link, Fuse, Universal, Bottom Head, Type K, 2 Amperes*	pc	500			

2	Link, Fuse, Universal, Bottom Head, Type K, 3 Amperes*	pc	1,500			
3	Link, Fuse, Universal, Bottom Head, Type K, 4 Amperes*	pc	1,500			
4	Link, Fuse, Universal, Bottom Head, Type K, 6 Amperes*	pc	1,500			
5	Link, Fuse, Universal, Bottom Head, Type K, 8 Amperes*	pc	1,500			
6	Link, Fuse, Universal, Bottom Head, Type K, 10 Amperes*	pc	1,500			
7	Link, Fuse, Universal, Bottom Head, Type K, 12 Amperes*	pc	1000			
8	Link, Fuse, Universal, Bottom Head, Type K, 15 Amperes*	pc	500			
9	Link, Fuse, Universal, Bottom Head, Type K, 20 Amperes*	pc	500			
10	Link, Fuse, Universal, Bottom Head, Type K, 25 Amperes*	pc	375			
11	Link, Fuse, Universal, Bottom Head, Type K, 30 Amperes*	pc	375			
12	Link, Fuse, Universal, Bottom Head, Type K, 40 Amperes*	pc	375			
13	Link, Fuse, Universal, Bottom Head, Type K, 45 Amperes*	pc	250			
14	Link, Fuse, Universal, Bottom Head, Type K, 50 Amperes*	pc	250			
15	Link, Fuse, Universal, Bottom Head, Type K, 60 Amperes*	pc	250			
16	Link, Fuse, Universal, Bottom Head, Type K, 65	pc	250			

**Procurement of Materials Maintenance, Rehabilitation,
Revamp of Lines and Capital Expenditure Projects**



	Amperes*				
TOTAL BID FOR LOT GF-4					PhP _____

Lot GF-5: Steel Poles						
ITEM #	DESCRIPTION	UOM	QTY	UNIT COST	TOTAL AMOUNT	BRAND & COUNTRY OF ORIGIN
1	Pole, Steel, 35', Bare-3.0mm, 500kgs	pc	185			
2	Pole, Steel, 40', Bare-3.0mm, 500kgs	pc	125			
3	Pole, Steel, 45', Bare-4.0mm, 750kgs (Two Section)	pc	100			
4	Pole, Steel, 50', Bare-4.0mm, 1200kgs (Two Section)	pc	25			
5	Pole, Steel, 60', Bare-4.0mm, 750kgs (Two Section)	pc	8			
6	Pole, Steel, 65', Bare-4.0mm, 750kgs (Two Section)	pc	3			
TOTAL BID FOR LOT GF-5					PhP _____	

Lot GF-6: Conductors and Wires						
ITEM #	DESCRIPTION	UOM	QTY	UNIT COST	TOTAL AMOUNT	BRAND & COUNTRY OF ORIGIN
1	Conductor, Bare, ACSR #2, AWG 6/1 (Meters)	mtr	5,000			
2	Conductor, Bare, ACSR #1/0, AWG 6/1 (Meters)	mtr	10,000			
3	Conductor, Bare, ACSR #2/0, AWG 6/1 (Meters)	mtr	15,000			
4	Conductor, Bare, ACSR #4/0, AWG 6/1 (Meters)	mtr	7,500			

5	Conductor, Insulated, ACSR #2, AWG 6/1 (Meters)	mtr	7,500			
6	Conductor, Insulated, ACSR #1/0, AWG 6/1 (Meters)	mtr	7,500			
7	Conductor, Insulated, ACSR #2/0, AWG 6/1 (Meters)	mtr	12,500			
8	Conductor, 23kV Insulated, Tree Wire, ACSR/AW - TR/OC-SB #1/0, AWG 6/1	mtr	5,000			
9	Conductor, 23kV Insulated, Tree Wire, ACSR/AW - TR/OC-SB #2/0, AWG 6/1	mtr	5,000			
10	Duplex, #1/0, AWG, 6/1 (Mtrs)	mtr	2,000			
11	Conductor, Duplex, #6 AWG (Meters)	mtr	18,000			
12	Conductor, Duplex, #4 AWG (Meters)	mtr	7,500			
13	Wire, Grounding, Steel Galvanized, 3 Strand, 5/16" Diameter (Feet)	ft	7,500			
14	Wire, Guy, Steel, 3/8", 7 Strand (Feet)	ft	4,000			
TOTAL BID FOR LOT GF-6					PhP	

Lot GF-7: Housewiring Materials						
ITEM #	DESCRIPTION	UOM	QTY	UNIT COST	TOTAL AMOUNT	BRAND & COUNTRY OF ORIGIN
1	Service Grip Preformed #6	pc	8,000			
2	Electrical tape	pc	5,270			
3	Wire, 5.5mm2 THHN, Green (Box)	box	10			
4	Wire, 5.5mm2 THHN, Black (Box)	box	10			
5	Wire, 8.0mm2 THHN, Green (Box)	box	5			
6	Wire, 8.0mm2 THHN,	box	5			

	Black (Box)					
7	Wire, 22.0mm2 THHN, Black (Meters)	mtrs	250			
8	Duplex, ACSR #6 AWG (Mtrs)	mtrs	152,000			
9	LED - 5 Watts	pc	6,000			
10	CONVENIENCE OUTLET (2 GANG)	pc	3,000			
11	Junction Box	pc	6,000			
12	RECEPTACLE	pc	6,000			
13	SAFETY BREAKER 30AMP	pc	3,000			
14	STAPLE WIRE	box	3,000			
15	TUMBLER SWITCH	pc	6,000			
16	WIRE - PDX #10	mtr	6,000			
17	WIRE - PDX #12	mtr	6,000			
18	Wire - PDX #14	mtr	45,000			
TOTAL BID FOR LOT GF-7				PhP _____		

LOT GF-8: Steel Casing and Meter Box						
ITEM #	DESCRIPTION	UOM	QTY	UNIT COST	TOTAL AMOUNT	BRAND & COUNTRY OF ORIGIN
1	Steel Casing, 6 capacity	units	75			
2	Steel Casing, 8 capacity	units	125			
3	Steel Casing, 10 capacity	units	125			
4	CT, Box, 10" x 14" x 18"	units	25			
5	Meter Box for 1 Phase	units	25			
6	Meter Box for 3 Phase	units	15			
TOTAL BID FOR LOT GF-8				PhP _____		

LOT GF-9: HDPE Materials						
ITEM #	DESCRIPTION	UOM	QTY	UNIT COST	TOTAL AMOUNT	BRAND & COUNTRY OF ORIGIN
1	High Density Polyethylene (HDPE) Crossarm Pin, 1 inch", long shank, 14 inches	pcs	2,500			
2	Pin, Pole Top, Channel, 1" Thread, 1 3/8" x 25" Long, High Density Polyethylene (HDPE)	pcs	2,000			
TOTAL BID FOR LOT GF-9				PhP _____		

Lot GF-10: Transformer Oil						
ITEM #	DESCRIPTION	UOM	QTY	UNIT COST	TOTAL AMOUNT	BRAND & COUNTRY OF ORIGIN
1	Transformer Oil	Drum(s)	15			
TOTAL BID FOR LOT GF-10				PhP _____		

Lot RF-1: Kwhr Meters for Add-ons (For Residential)						
ITEM #	DESCRIPTION	UOM	QTY	UNIT COST	TOTAL AMOUNT	BRAND & COUNTRY OF ORIGIN
1	Meter, KWH, 1 Phase, Class 1, 240V, 5(100)A, Bottom Connected, Electronic*	PC(S)	2080			
TOTAL BID FOR LOT RF-1				PhP _____		

Lot RF-2: Kwhr Meters for Add-ons (For Low & High Voltage Consumers)*						
ITEM #	DESCRIPTION	UOM	QTY	UNIT COST	TOTAL AMOUNT	BRAND & COUNTRY OF ORIGIN
1	Meter, KWH, 1 Phase, Class 200, 2W, 240V, Form 1S, Socket Type, Electronic*	PC(S)	10			
2	Meter, KWH, 1 Phase, Class 20, 240V, 2W, Form 3S, Electronic, Demand, KVARH w/ TOU	PC(S)	22			
3	Meter, KWH, 3 Phase, Class 20, 240V, 3W, Form 9S, Electronic, Demand & Energy	PC(S)	4			
TOTAL BID FOR LOT RF-2				PhP _____		

Lot RF-3: KWHR Meters for Change Meter (For Residential)*						
ITEM #	DESCRIPTION	UOM	QTY	UNIT COST	TOTAL AMOUNT	BRAND & COUNTRY OF ORIGIN
1	Meter, KWH, 1 Phase, Class 1, 240V, 5(100)A, Bottom Connected, Electronic *	PC(S)	7,992			
TOTAL BID FOR LOT RF-3				PhP _____		

Lot RF-4: KWHR Meters for Change Meter (For Low & High Voltage Consumers)*						
ITEM #	DESCRIPTION	UOM	QTY	UNIT COST	TOTAL AMOUNT	BRAND & COUNTRY OF ORIGIN
1	Meter, KWH, 1 Phase, Class 200, 2W, 240V, Form 1S, Socket Type, Electronic*	PC(S)	23			

2	Meter, KWH, 1 Phase, Class 20, 240V, 2W, Form 3S, Electronic, Demand, KVARH w/ TOU	PC(S)	54			
3	Meter, KWH, 3 Phase, Class 20, 240V, 3W, Form 9S, Electronic, Demand & Energy	PC(S)	1			
TOTAL BID FOR LOT RF-4				Php _____		

Lot RF-5: Distribution Transformers						
ITEM #	DESCRIPTION	UOM	QTY	UNIT COST	TOTAL AMOUNT	BRAND & COUNTRY OF ORIGIN
1	Transformer, Pole Type, Conventional, 25 KVA	unit	30			
2	Transformer, Pole Type, Conventional, 37.5 KVA	unit	30			
3	Transformer, Pole Type, Conventional, 50 KVA	unit	15			
TOTAL BID FOR LOT RF-5				Php _____		

Lot RF-6: Construction Materials and Hardwares for Extension of Open Secondary Distribution Projects						
ITEM #	DESCRIPTION	UOM	QTY	UNIT COST	TOTAL AMOUNT	BRAND & COUNTRY OF ORIGIN
1	Anchor, Expanding, 10,000 Pounds, 8 Way, Galvanized Steel	set	40			
2	Attachment, Guy, Malleable type with 11/16" Hole Diameter	pc	30			
3	Bolt, Double Upset, 5/8" x 10", Hot Dip Galvanized	pc	56			
4	Bolt, Machine, 5/8" X 10", Hot Dip Galvanized	pc	40			

5	Bolt, Machine, 5/8" x 8", Hot Dip Galvanized	pc	40			
6	Bolt, Oval Eye, 5/8" X 10", Hot Dip Galvanized	pc	70			
7	Bolt, Single Upset, 5/8" x 10", Hot Dip Galvanized	pc	56			
8	Bracket, Clevis Deadend without Spool	pc	80			
9	Clamp, Anchor Bonding Single Eye Rod, 5/8'	pc	40			
10	Clamp, Guy Straight, 3 Bolt, Heavy Duty Steel	pc	80			
11	Clamp, Loop Deadend, #2-1/0 ACSR	pc	60			
12	Clevis, Service, Swinging without Spool	pc	30			
13	Connector, Compression, 'YHO 150'	pc	176			
14	Connector, Ground Rod (Clamp) for 5/8" Steel Rod	pc	96			
15	Insulator, Spool, 1-3/4", ANSI, Class 53 -2	pc	112			
16	Insulator, Spool, 3", ANSI, Class 53 - 4	pc	110			
17	Rod, Anchor, Threaded, Single Eye, 5/8" X 7'	pc	40			
18	Rod, Ground Steel, Galvanized, 5/8" X 10'	pc	96			
19	Washer, Square, Flat, 2-1/4" X 2-1/4" X 3/16", 13/16" Diameter Hole	pc	262			
TOTAL BID FOR LOT RF-6				Php _____		

Lot RF-7: Conductors and Wires for Extension of Open Secondary Distribution Projects						
ITEM #	DESCRIPTION	UOM	QTY	UNIT COST	TOTAL AMOUNT	BRAND & COUNTRY OF ORIGIN
1	Conductor, Bare, ACSR #1/0, AWG 6/1	mtr	12,500			
2	Conductor, Insulated, ACSR #2/0, AWG 6/1 (600 V)	mtr	12,500			
3	Wire, Grounding, Aluminum Alloy, 3 Strand, #4 AWG	ft	3,500			
4	Guy Wire, 3/8' DIA. HS - 7 Strand (feet.)	ft	2,000			
TOTAL BID FOR LOT RF-7					Php _____	

Lot RF-8: Poles for Extension of Open Secondary Distribution Projects						
ITEM #	DESCRIPTION	UOM	QTY	UNIT COST	TOTAL AMOUNT	BRAND & COUNTRY OF ORIGIN
1	Pole, Steel, 35' (3.0mm)	pc	120			
TOTAL BID FOR LOT RF-8					Php _____	

Total Bid Offer
In Figures: _____
In Words: _____

Name of Establishment/Company

Address

By: _____
Signature of Proprietor/Authorized Representative

Designation

NOTE: To be attached in Envelope 2-Folder 2.Financial Proposal.a-Bid prices in the bid form



TECHNICAL SPECIFICATIONS

1. DISTRIBUTION TRANSFORMER

STANDARD LOSSES FOR DISTRIBUTION TRANSFORMER

KVA	NO LOAD LOSS (IRON LOSS)	LOAD LOSS (COPPER LOSS)	TOTAL LOSS (CU & FE)	PRIMARY FULL LOAD CURRENTS (AMPS)	SECONDARY FULL LOAD CURRENTS (AMPS)
	WATTS	WATTS	WATTS		
25	80	290	370	3.28	104.16
37.5	105	360	465	4.91	156.25
50	135	500	635	6.56	208.33

Transformers that exceed the above standards are not allowed.

Note:

1. Distribution Transformers must be of copper windings with manufacturer's certificate and test results and **must not be made in China**.
2. Distribution Transformers must be a conventional type, silicon steel core and nominal voltage is tap 3.
3. Every unit of Distribution Transformer shall have a label of "ILECO III" with a 3-inch height of letters and has a color coding (neon color of **Red – 50KVA**, **Blue – 37.50KVA** & **Green – 25KVA**) at the bottom part depending on its rating. (Use acrylic paint)



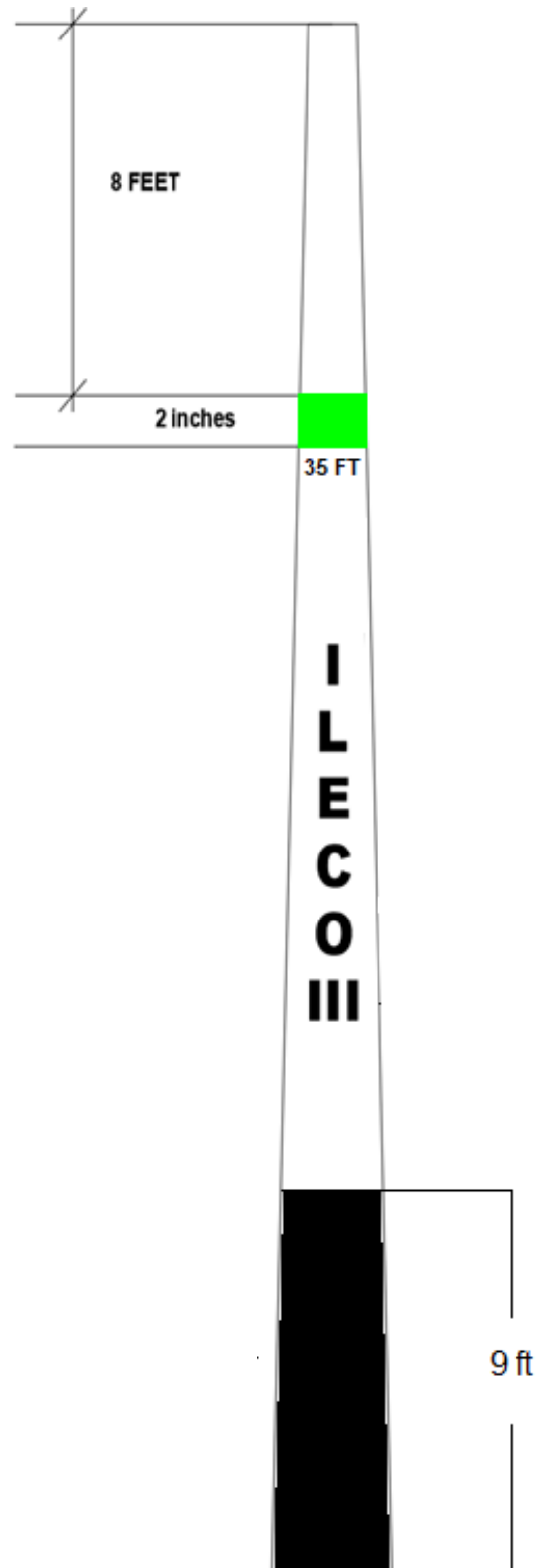
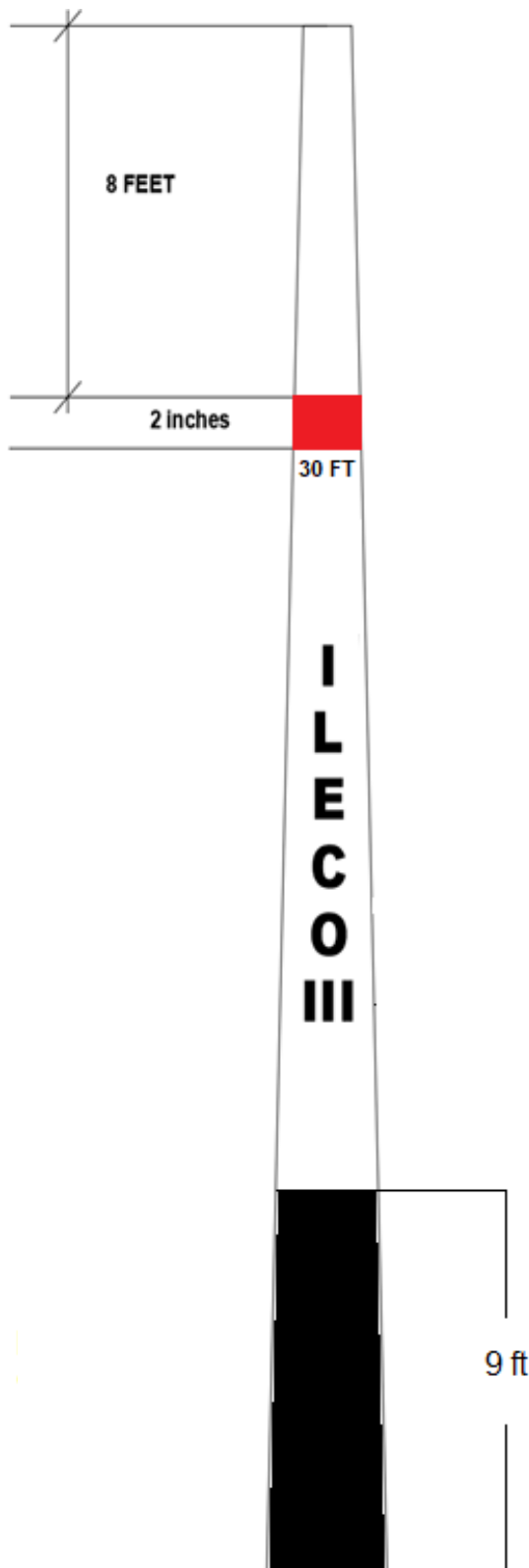
2. STEEL POLES

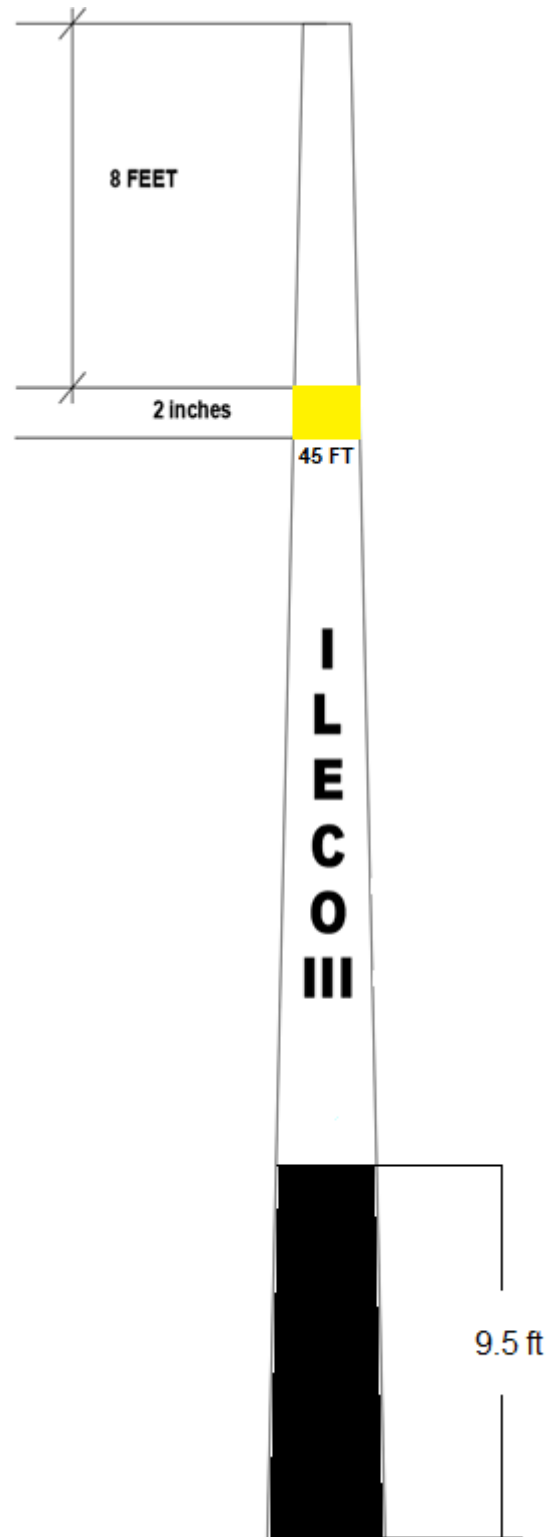
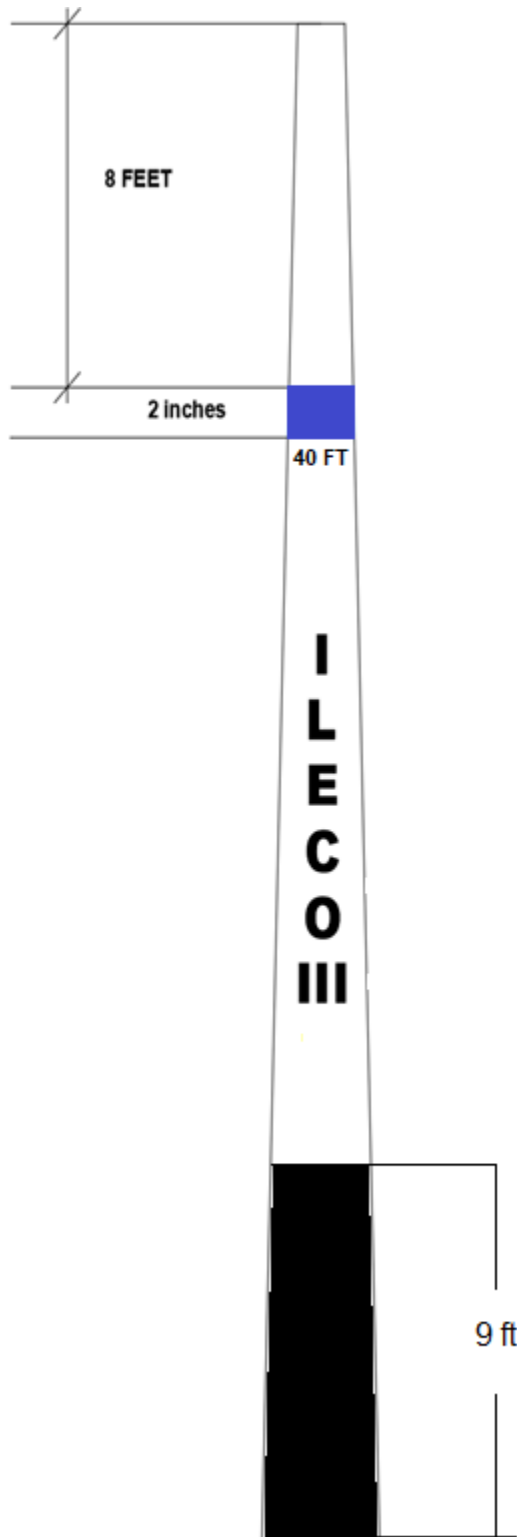
Type: Steel

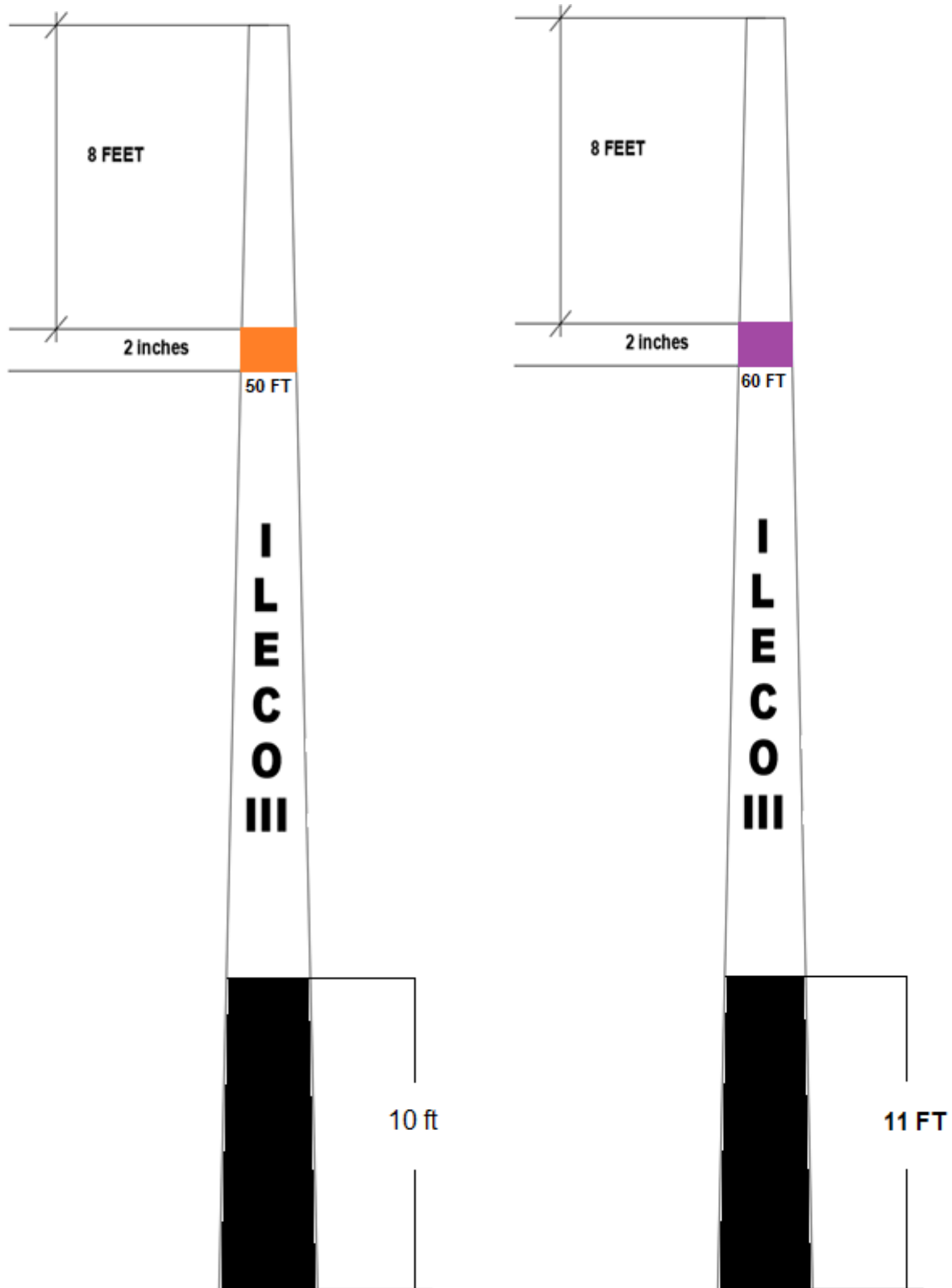
Particulars	30- ft	35 - ft	40- ft	45 - ft	50 - ft	60 - ft	65 - ft
Class	3	3	3	3	3	3	3
Shape	Octagonal	Octagonal	Octagonal	Octagonal	Octagonal	Dodecagonal	Dodecagonal
Strength Requirement (pounds)	3000	3000	3000	3000	3000	3400	4500
Steel Material	ASTM A570-79	ASTM A570-79	ASTM A570-79	ASTM A570-79	ASTM A570-79	ASTM A570-79	ASTM A570-79
Minimum Load Break (kgs)	500	500	500	750	1200	1500	2000
Tip Diameter	127 mm	127 mm	127 mm	127 mm	127 mm	150 mm	150 mm
Butt Diameter	226 mm	248 mm	317 mm	328 mm	340 mm	400 mm	450 mm
Wall Thickness	3 mm	3 mm	3 mm	4 mm	4 mm	6 mm	8 mm
With Framing Holes	Yes	Yes	Yes	Yes	Yes	Yes	Yes
With Climbing Holes	Yes	Yes	Yes	Yes	Yes	Yes	Yes
Min. Zinc Coating (g/sq.m.)	610	610	610	610	610	610	610
Sections	1	1	1	2	2	2	2

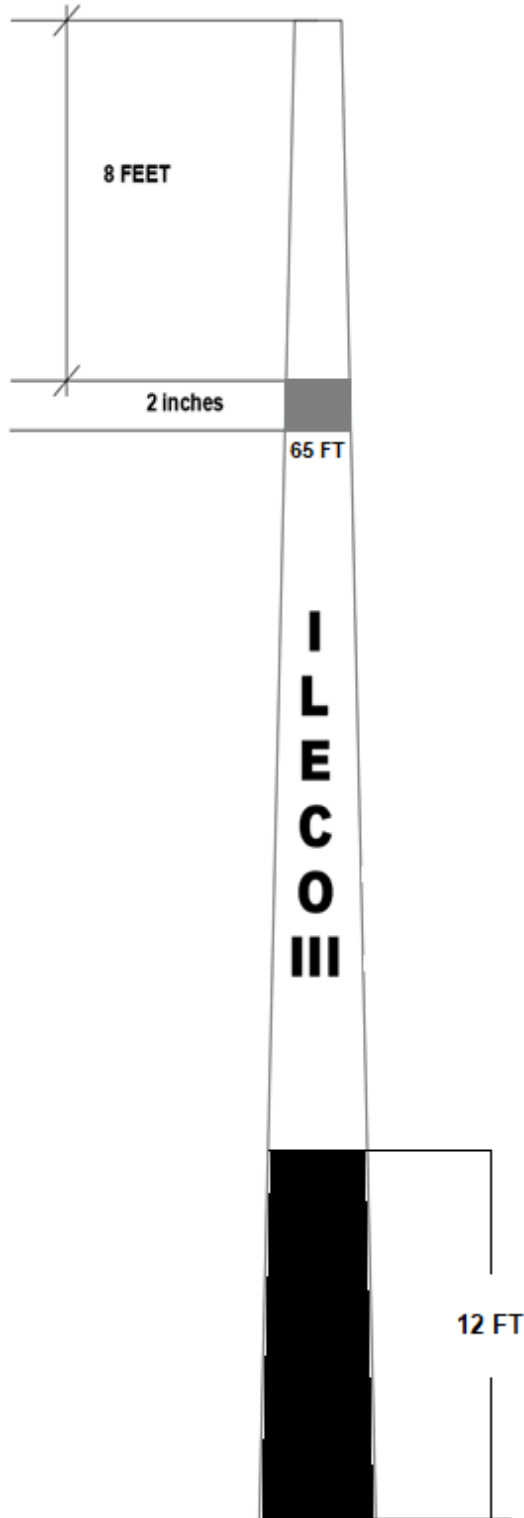
Note:

- The 45ft, 50ft, 60ft, and 65ft Steel pole must be segmented.*
- Every unit of steel pole shall have a label of "ILECO III" with a 4-inch height of letters and a label for the height of the pole is 3-inch. It shall has a color coding (neon color of Red - 30ft Steel Pole, Green - 35ft Steel Pole, Blue - 40ft Steel Pole, Yellow - 45t Steel Pole, Orange - 50ft Steel Pole, Purple – 60ft Pole, & Grey – 65ft Pole) at the upper part depending on its height. (Use acrylic paint)*
- Poles shall be coated the bottom part by the combination of coal tar and an epoxy / polyamide resin (epoxy resin-based and polyamide resin-based) that provides a maximum resistance to corrosion, chemicals and abrasion to surfaces exposed in harsh environments.*





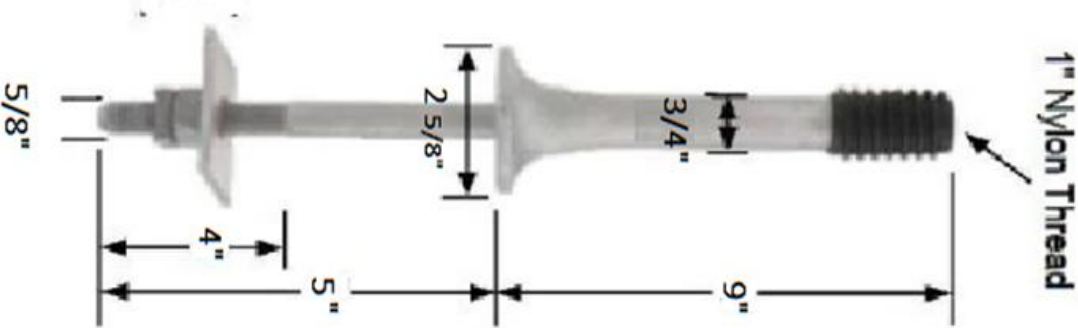


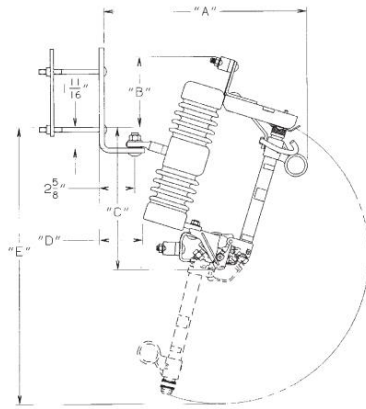


3. ELECTRICAL HARDWARES AND CONDUCTORS

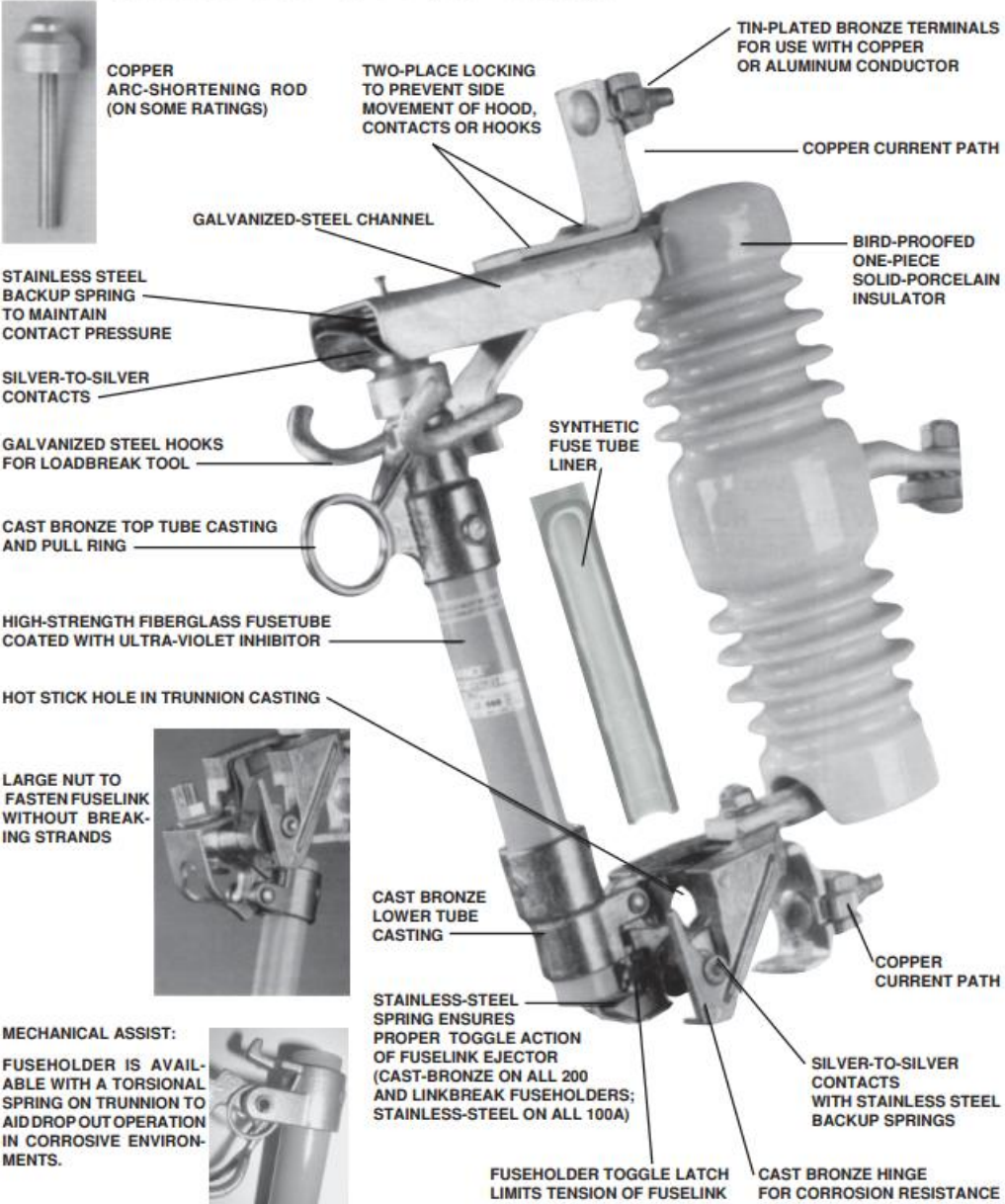
1. Mounting brackets for fuse cut-outs shall be porcelain and its arrester shall be polymer.
2. Compression connectors must be original and made in America or Europe
3. Zinc coating of Hot dip galvanized line hardware must be 86 minimum microns.
4. Materials/Hardware/Conductors made in China shall not be accepted except pin, spool, and suspension insulator.

Item(s)	Specifications
Pole Line Hardware	<ol style="list-style-type: none"> a. All hardware and accessories shall be hot dipped galvanized in accordance to ANSI/ASTM A153-82 b. The material offered shall be of best quality, workmanship, well finished and of latest proven design and conform to the best modern practices. All castings shall be free from internal defects like blow-holes, cracks, inclusion, and shrinkage and shall be smooth. c. All mechanical surface shall be true, smooth and well finished.
Bolts and Nuts	<ol style="list-style-type: none"> a. Each bolt shall bear a permanent symbol or identification mark of the manufacturer in a place and manner which will not adversely affect integrity or utilization of the bolt; b. Shall have smooth surfaces, free from blemishes and imperfections; c. Shall be well shaped, with no irregularities, malformations or cracks and the inner surface shall be free from projections or other sharp edges.
Pin, Pole Top,	<ol style="list-style-type: none"> a. Chanel, 1" Nylon Thread, 25" Long, the nylon thread shall withstand a minimum load of 3,000 lbs in tension without stripping or pulling off the pin. b. Mounting holes are 11/16" and bottom slots 11/16" x 1-1/4" c. Hot dip Galvanized

<p>Pin, Crossarm, long Shank, 1" Thread Dia., 14" long</p>	<p>a. Long Shank, 14" long, 1" Thread Dia. Nylon Thread x 5/8". The nylon thread shall withstand a minimum load of 3,000 lbs in tension without stripping or pulling off the pin. b. Hot dip Galvanized</p> 
<p>Link, Fuse, Universal</p>	<p>a. Type K (ANSI) Cutout fuselink with a 23" pigtail and a removable button head. b. Fully Compliant with ANSI/IEEE C37.42 – 2016 c. Compatible with universal style expulsion fuse holders d. Individually packed for all weather protection e. Type, Current Rating and Catalog ID on packaging and fuse for easy identification f. Must be original brands from South America/North America/Europe</p>
<p>Mounting Bracket for Fuse Cut-out with Arrester and fuse tube (200Amp/100 Amp)</p>	<p>a. 15 kV, 110 kV BIL, Link break Type C Porcelain Cutout w/ Arrester Combination with a 200A/100A, 10kAIC fuse holder, parallel-groove connector and a D-shape pole mounting bracket. b. Mounting brackets for fuse cut-outs shall be porcelain and its arrester shall be polymer. c. The length of fuse tube is at least 280mm and must be adjustable head. d. Type, Current Rating and Catalog ID on packaging for easy identification e. Compliant with ANSI/IEEE C37.42-2016 f. Must be original brands from South America/North America/Europe</p>



STANDARD Type C Cutout with
NEMA Type B Bracket

	
<p>Clamp, Hotline</p>	<ol style="list-style-type: none"> Cast with high conductivity aluminum alloy compatible with any aluminum or aluminum covered conductor. An enclosed compression spring on the eye screw thread in the clamp run provides vibration resistant connections. Hot dip Galvanized
	<ol style="list-style-type: none"> Universal and reversible figure H shaped aluminum connector Conductors are separated by the shape of the connector

Connector, Compression	<ul style="list-style-type: none"> c. Bendable tabs secure both run and tap conductors freeing the lineman’s hands to work with the installation tool d. Massive aluminum design minimizes corrosion due to galvanic corrosion e. Conductor Size (tap Range) and Catalog ID on packaging for easy identification f. Must be made from South America/North America/Europe 	
Clamp, Loop Deadend	<ul style="list-style-type: none"> a. High strength Aluminum casting with galvanized steel U-Bolt b. Extra-long soft aluminum spacer and caps that confine strands. Holding strength using two deadend clamps exceeds rated breaking strength of conductors. c. Hot dip Galvanized 	
Clamp, Guy Straight	<ul style="list-style-type: none"> a. 3 Bolt, 6” long, Drop Forged Steel b. Heavy duty Steel (HDG) 	
Rod Ground Steel	<ul style="list-style-type: none"> a. Hot dip Galvanized, 5/8 x 10’ b. Hot rolled high carbon steel produced by the open-heath, basic oxygen or electric-furnace process 	
Conductor	<ul style="list-style-type: none"> a. These conductors will used on Coop distribution line 13.2/7.62 kV b. All Aluminum and steel strands shall be smooth and free from all imperfections, spills and splits. c. The conductor shall be free of imperfections, sharp protrusions and blemishes not consistent with good commercial practice. d. The conductors shall be manufactured from EC grade aluminum rods suitably hard-drawn on wire drawing machines. e. Galvanized steel wire shall be drawn from high carbon steel rods produced by either acidic or basic open-hearth process. f. Manufacturing test result required: <ul style="list-style-type: none"> 1. Chemical analysis of zinc used for galvanizing 2. Chemical analysis of aluminum used for making aluminum strands 3. Chemical analysis of steel used for making steel strands 	

4. High Density Polyethylene Crossarm Pin and Pole Top Pin Specifications

	Crossarm Pin	Pole Top Pin
Diameter of Thread	1 inch	1 inch
Total Length	15 inches	25 inches
Insulated Length	9 inches	25 inches
Stud Size	5/8 inch	-
Voltage Rating	35 kV Tested	35 kV Tested
Pulling Capacity	@80°C: 4.52 kN Ave.	5.9 kN Ave.
Bending Capacity	3.58 kN. Ave.	3 kN Ave.
Torsion Test	Tested 106.8 N-m Unbroken	-
Low Frequency Flashover Voltage Test	Dry: 89kV Ave.	-
Low Frequency Withstand Voltage	@1 min: 81 kV	-

5. Power Pole Cap

Property	Specification
Material	Ethylene Propylene Diene Monomer (EPDM)

Material Description	Ethylene propylene diene monomer, or EPDM, is a type of synthetic rubber that is commonly used across many industries.
Dimensions	Height: 90mm Outside Diameter: 160mm Thickness: 5mm
	

6. Transformer Oil

Property	Typical Value
Viscosity, cSt at 40°C	9.56
Viscosity, cSt at -30°C	885
Pour Point, °C	-51
Water Content, PPM	<10
Breakdown Voltage, kV	80



Density at 20°C, g/ml	0.8732
DDF at 90°C	<0.001
Appearance	Clear & Bright
Acidity, mg KOH/g	0.004
Interfacial Tension, dynes/cm	45
Total Sulphur Content, mg/kg	<300
Corrosive Sulphur	Not Corrosive
Potentially Corrosive Sulphur	Not Corrosive
DBDS, mg/kg	Not Detectable
Inhibitors of IEC 60666, mg/kg	Not Detectable
Metal Passivator Additives of IEC 60666, mg/kg	Not Detectable
2-Furfural Content, mg/kg	Not Detectable
Oxidation Stability @120°C, 164 hrs	
Total Acidity, mg KOH/g	0.8
Sludge, %	0.21
DDF @90°C	0.23
Flash Point, °C	146
PCA Content, %	2.32
PCB Content, mg/kg	Not Detectable

7. KWH Meter

a) Electronic, Single Phase, Form 1S

	Description
	Meter, KWH, 1 Phase, Class 200, 2W, 240V, Form 1S, Socket Type, Electronic
	Class 0.2 or better accuracy
	240 V (nominal voltage) <i>-70% to 120% of reference Voltage</i>
	LCD, 5 digit display (≥ 13 mm x 6mm)
	Meter base & cover: Flame retardant and UV stabilized polycarbonate
	Meters must be included in the list of approved meters of ERC (with attached ERC Certificate of type Approval)
	Polycarbonate plastic cover shall effectively seal the meter to prevent the entry of rain and dust into its internal parts.
	Certification from the manufacturer
	Manufacturer with ISO Certification

Note: Meter type approved by ERC and with ERC seal and sticker.

b) Electronic, Three Phase, Form 9S

	Description
	Meter, KWH, 3Phase, Class 20, 4W, 120-480V, Form 9S, Bi-directional, Socket Type, Electronic
	Class 0.2 or better accuracy



	120 V - 480 V (nominal voltage) <i>-80% to 120% of reference Voltage</i>
	LCD, 6 digit display (≥13 mm x 6mm)
	Meter base & cover: Flame retardant and UV stabilized polycarbonate
	Test Amps Rating: 2.5 A
	With optical port
	With Soft switches: T- Time of Use K- KVAR Measures R – Basic Recording (4 channels)
	Meters must be included in the list of approved meters of ERC (with attached ERC Certificate of type Approval)
	Polycarbonate plastic cover shall effectively seal the meter to prevent the entry of rain and dust into its internal parts.
	Certification from the manufacturer
	Manufacturer with ISO Certification

Note: Meter type approved by ERC and with ERC seal and sticker.



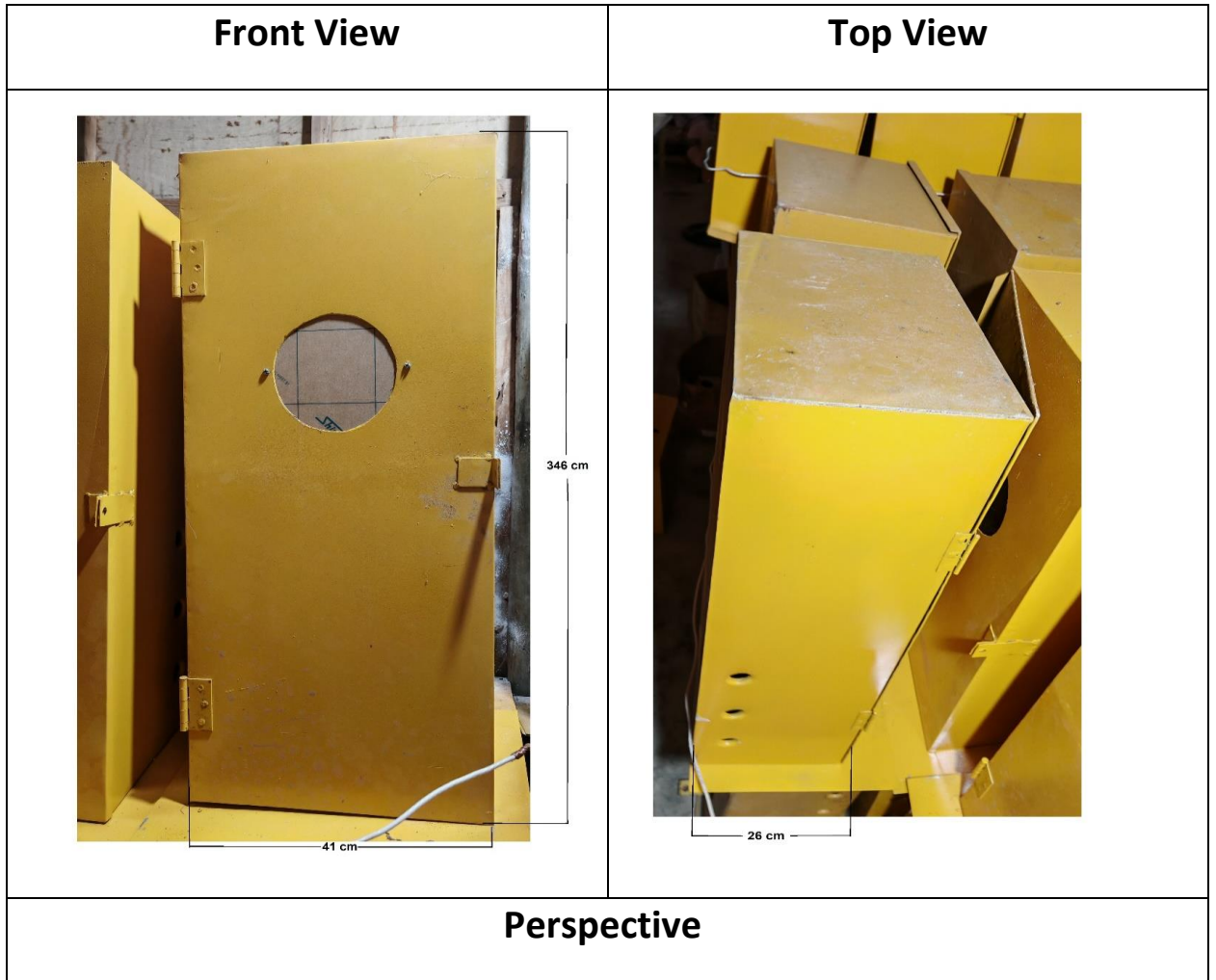
c) Electronic, Single Phase, Form 3S

	Description
	Meter, KWH, 1 Phase, Class 20, 2W, 120-480V, Form 3S, Bi-directional, Socket Type, Electronic
	Class 0.2 or better accuracy
	120 V - 480 V (nominal voltage) <i>-80% to 120% of reference Voltage</i>
	LCD, 6-digit display (≥ 13 mm x 6mm)
	Meter base & cover: Flame retardant and UV stabilized polycarbonate
	Test Amps Rating: 2.5 A
	With optical port
	With Soft switches: T- Time of Use K- KVAR Measures R – Basic Recording (4 channels)
	Meters must be included in the list of approved meters of ERC (with attached ERC Certificate of type Approval)
	Polycarbonate plastic cover shall effectively seal the meter to prevent the entry of rain and dust into its internal parts.
	With Certification from the manufacturer
	Manufacturer with ISO certification

Note: Meter type approved by ERC and with ERC seal and sticker.

8. Meter Box

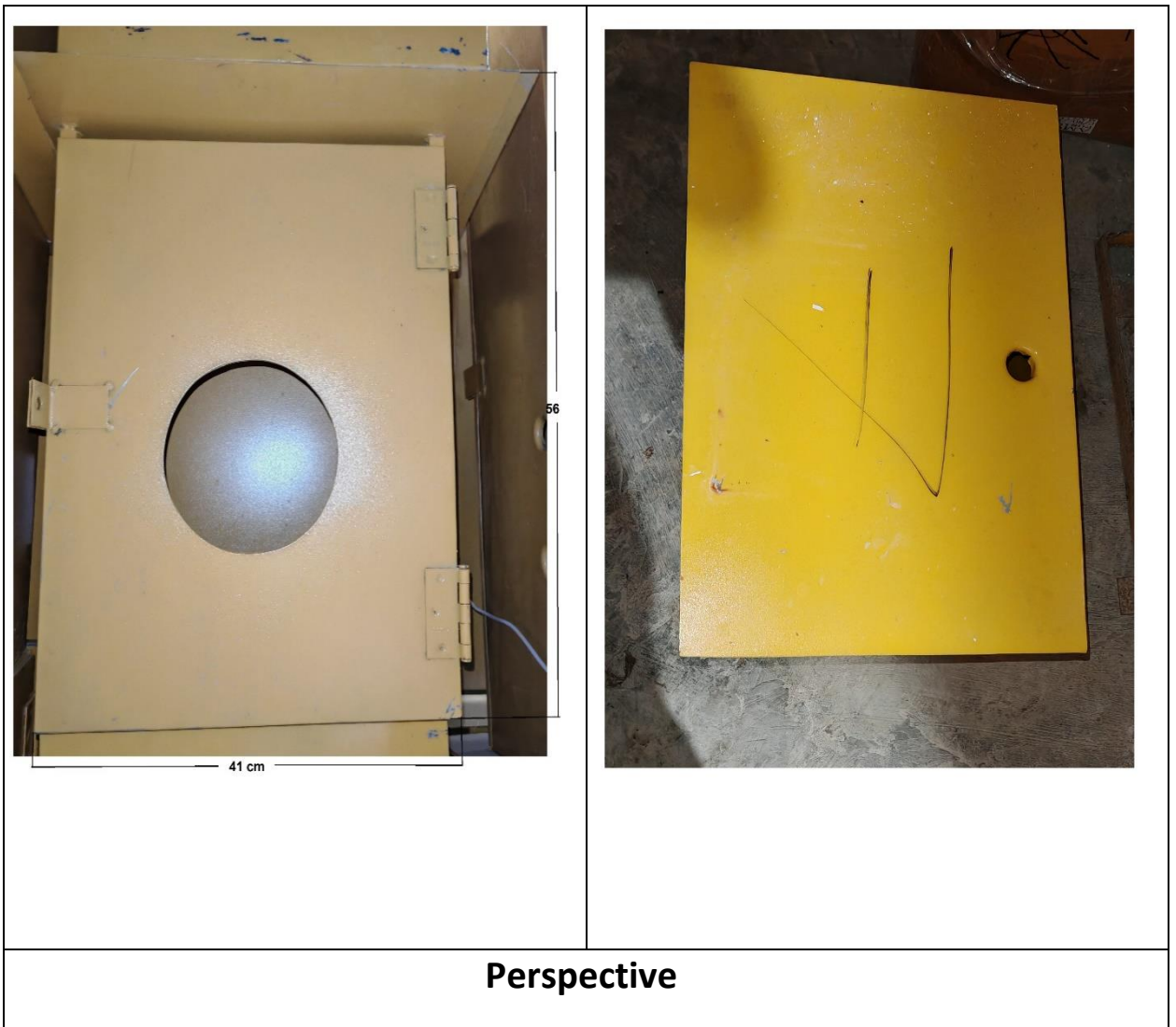
A. For Single Phase and Three Phase





B. For Three Phase

Front View	Top View
-------------------	-----------------

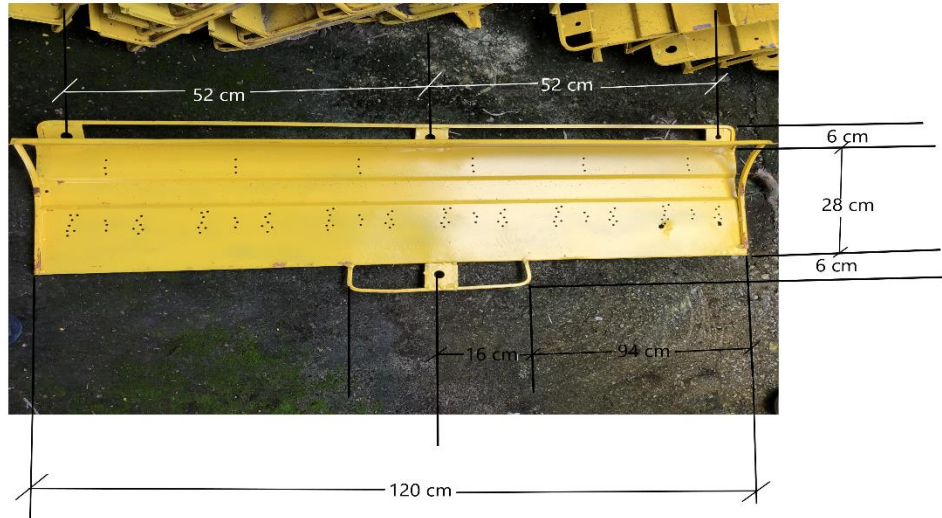




9. Steel Casing Dimensions

A. Steel Casing (6 Units Capacity)

Front View



Top View



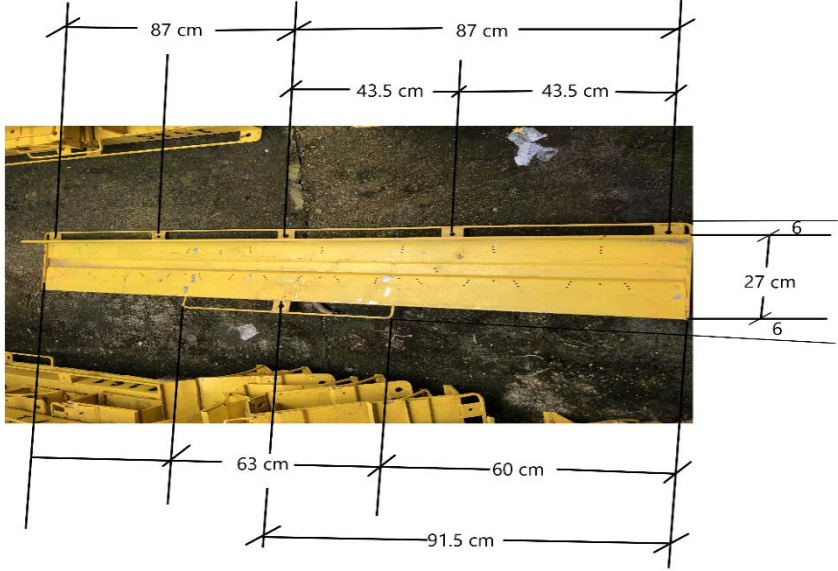

Back View



Perspective



B. Steel Casing (8 Units Capacity)

<p>Front View</p>	 <p>87 cm</p> <p>87 cm</p> <p>43.5 cm</p> <p>43.5 cm</p> <p>6</p> <p>27 cm</p> <p>6</p> <p>63 cm</p> <p>60 cm</p> <p>91.5 cm</p>
<p>Top View</p>	 <p>10 cm</p> <p>183 cm</p>

Back View



Perspective



Note: Use G.I. Sheet # 22



d) Meter, KWH, 1 Phase, Class 1, 240V, 5(100)A, Bottom Connected,

KWH METER	:	ELECTRONIC, SINGLE PHASE, 2 WIRE, W/BACK-UP BATTERY
CURRENT RATING	:	5(100) AMP.
VOLTAGE	:	240 VOLTS
FREQUENCY	:	60 HERTZ
IMPULSE	:	1600/KWH
DISPLAY	:	DIGITAL (LCD)
DIGIT DISPLAY	:	6 WITH 1 DEC. POINT
METER PARAMETERS	:	VOLTAGE, CURRENT, INS. DEMAND, ENERGY READING
INTEGER DIMENSION	:	15mm X 7mm
TERMINAL COVER	:	TRANSPARENT, POLYCARBONATE
TERMINAL SCREW	:	BRASS/STAINLESS STEEL
BODY	:	HIGH IMPACT POLYCARBONATE WITH AT LEAST 3 mm THICKNESS
GLASS FASTENER	:	POLYCARBONATE
NAMEPLATE	:	ENGRAVED WITH ILECO III
TERMINAL HOLE DIA.	:	8 mm
ACCURACY	:	BOTTOM CONNECTED
CONNECTION	:	BOTTOM CONNECTED

Note: Meter type approved by ERC and with ERC seal and sticker.